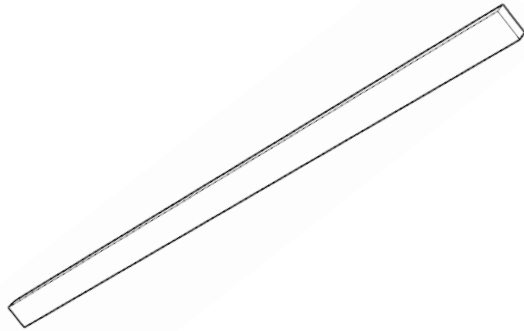
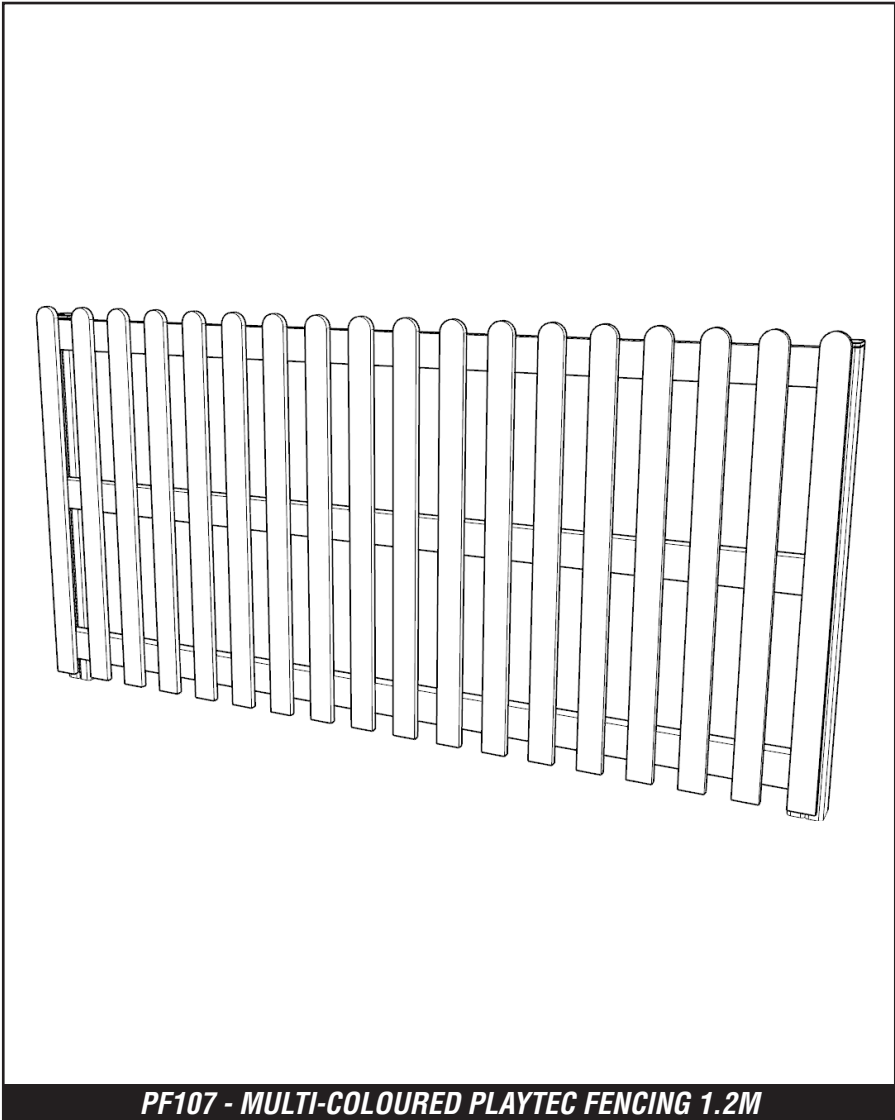


PF107- MULTI-COLOURED PLAYTEC FENCING 1.2M

Installation Instructions



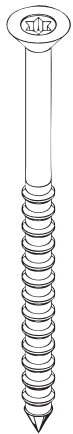
x3

HORIZONTAL TIMBER -PF107-A



x12

M8X80



x52

M6X40



x18

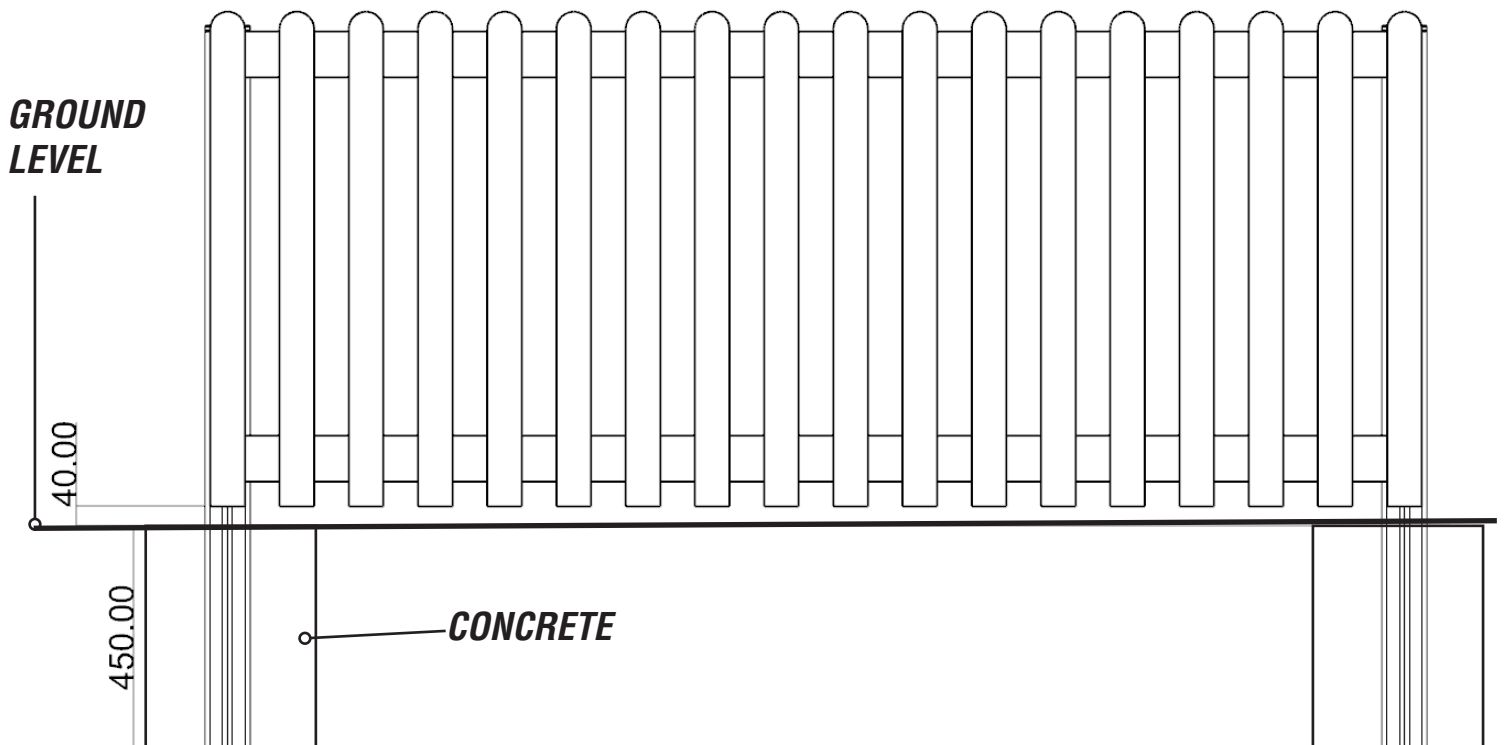
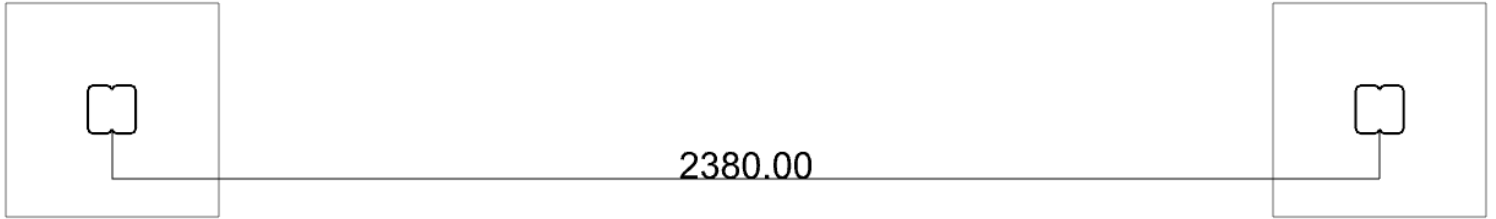
SLATS



x2

UPRIGHTS -PF107-B

FOUNDATION DETAILS



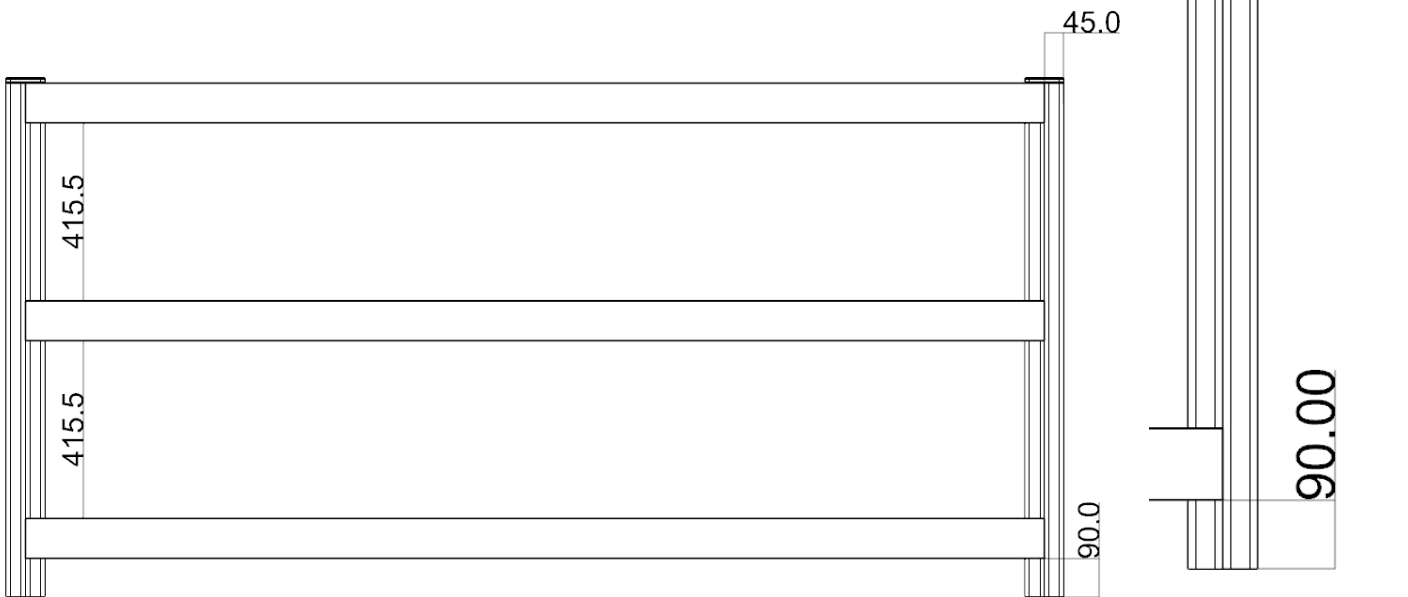
INSTALLATION INSTRUCTIONS

1 INSTALL UPRIGHTS INTO THE GROUND



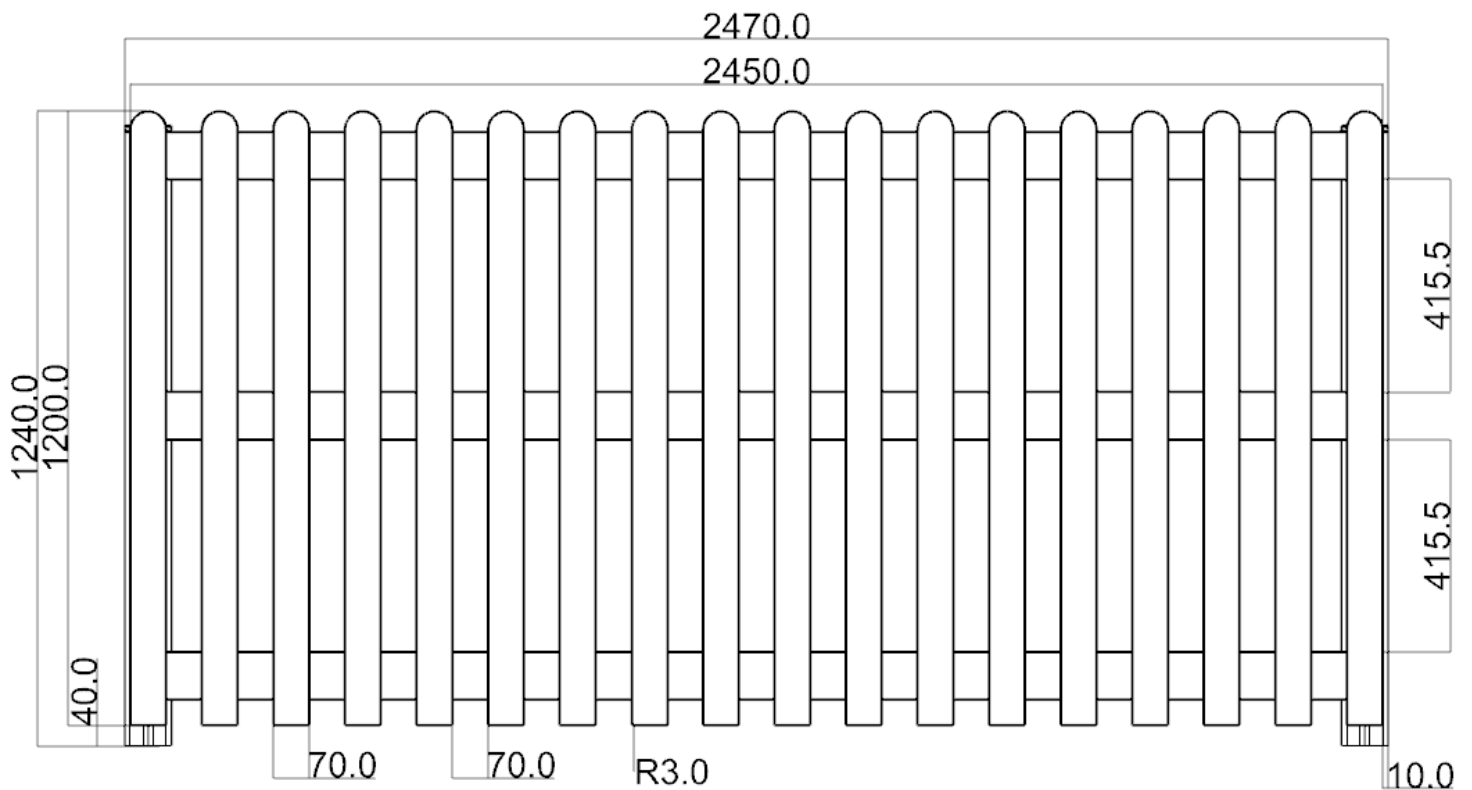
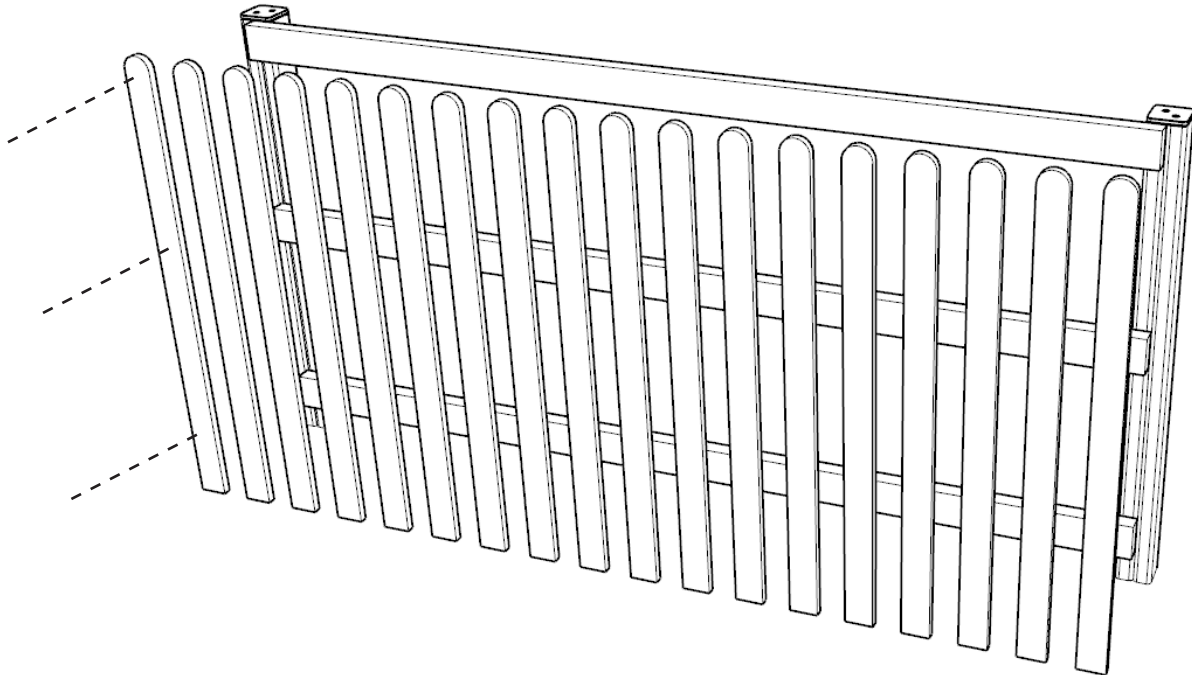
2 POSITION THE GUARD RAIL / PANEL AS SHOWN BELOW USING - M8X80 [X12]

**SCREW TIMBER OFF CENTRE 45MM
USING M8X80 X8**



INSTALLATION INSTRUCTIONS

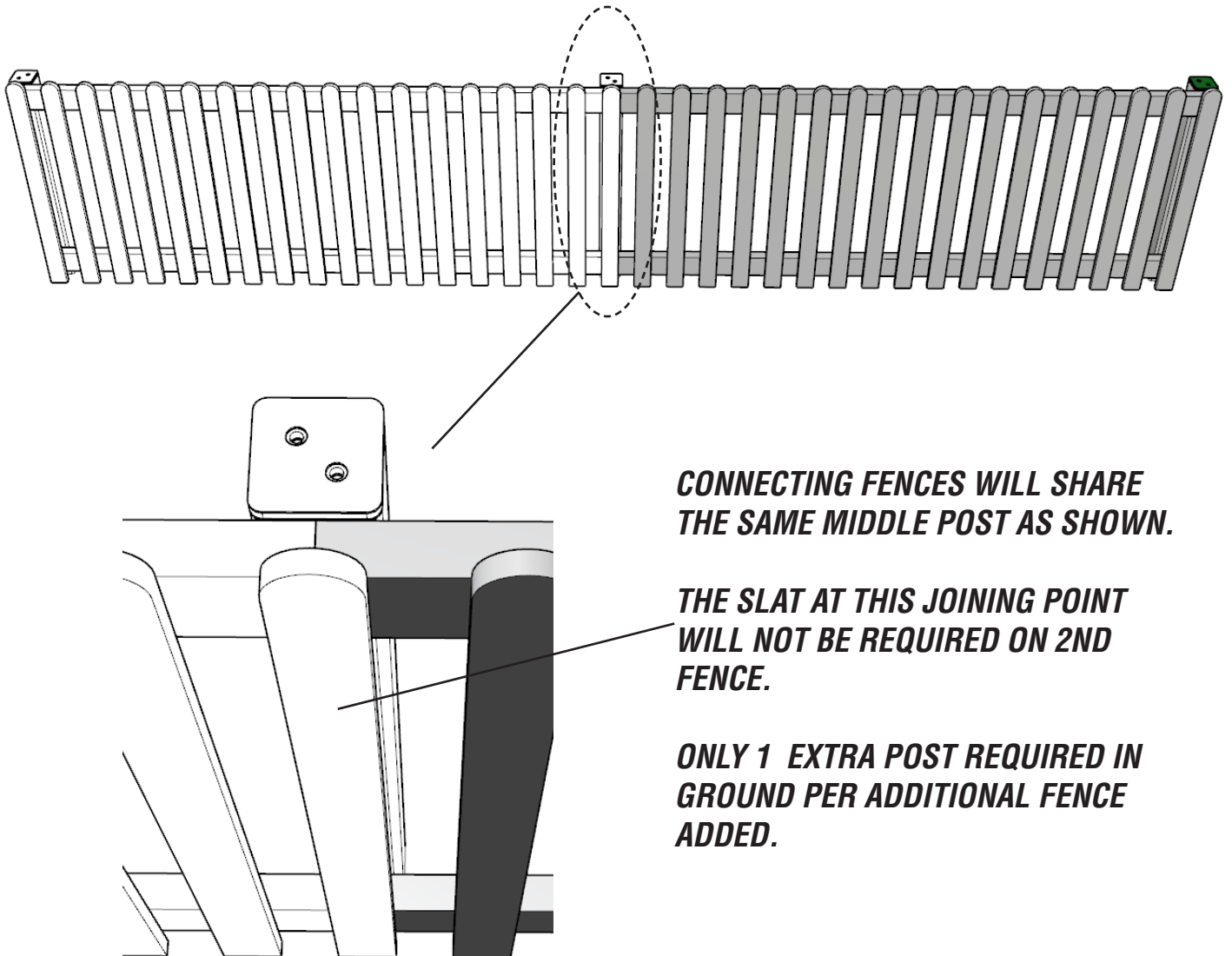
3 ATTACH SLATS TO THE FRAME USING M6 X 40 WOOD SCREWS [X54]



(SPACING BETWEEN SLATS 70MM)

INSTALLATION INSTRUCTIONS

4 IF JOINING MULTIPLE FENCES USING M6 X 40 WOOD SCREWS [X4]



ADDITIONAL DIMENSIONS

