



2022 / 2023

# PE & Sports Premium A Comprehensive Guide



Thank you for downloading our PE & Sports Premium Guide. In this guide, we'll explore everything you need to know about the PE & Sports Premium, including what it is, how it can be used, and the benefits it can bring to your school. This guide will provide you with valuable insights and tips on how to make the most of the PE & Sports Premium funding.



If you'd like to book a call with us, or learn more about what we do, please click [here](#)

Thank you from everyone here at Creative Play.

**Jessica Tilston**

Marketing Manager | Creative Play

[play@creativeplayuk.com](mailto:play@creativeplayuk.com)

01244 375627

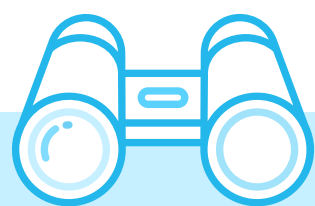
[www.creativeplayuk.com](http://www.creativeplayuk.com)



## The Outdoor Play Experts

Since 1991





## Why Read This Guide?

PE & Sport Premium funding has now been available for over 10 years. Using your funding in an effective and sustainable way can be difficult so to help we've created this guide to breakdown all the details, and how it affects you and your school.

Primary Schools play a vital role in helping children and young people stay active. Establishing a love of physical activity early on is especially important, which is why schools are encouraged to include at least 30 minutes of exercise during the school day as part of their high-quality PE curriculum and outdoor play.

The PE & Sports Premium funding ensures schools can offer more enriched physical education, sport and outdoor play opportunities to enhance student health and activity levels. This investment should be used for sustainable improvements, creating a healthier generation of learners.

With the help of this funding, schools can make long-term improvements to their sports and playground facilities. Pupils can look forward to enhanced sports activities that go beyond PE lessons and into their break and lunchtime outdoor play. This could include ensuring future pupils benefit from these improvements, as well as adding new activities that promote healthy exercise habits.

## Who Should Read This Guide?

Perfect for any school leaders responsible for PE and Sport in their school, and budget holders with accountability for PE & Premium funding use.

## Sustainable Improvements

Schools should prioritise making sustainable improvements, which can be achieved by investing and improving the skills of teaching staff supporting long-term change to the school's overall methodology to physical activity, PE curriculum and provision of school sports.

The Governemnt Guidance states that schools should use their PE & Sports Premium to make improvements in the following areas:

1. All staff are equipped with the confidence, know-how and expertise needed to teach physical education and sport effectively.
2. Pupils are encouraged to stay active through regular physical activity.
3. Raising the profile and facilities for PE & sport throughout the school.
4. Increasing the range of sports and physical activities available to pupils.
5. Encourage participation in physical extra-curricular activities and competitive sports.







## How to achieve sustainable improvements

Examples of how this can be achieved:

- Provide professional development opportunities, resources, and training to staff to increase the effectiveness of teaching PE and Sports within the curriculum.
- Promote physical activity outside of lessons e.g. encouraging active travel to and from school and active breaktimes.
- Targeted support and involving those who are least active.
- Incorporate an active mile as part of the school day on the school playground or field.

## What PE & sports premium should not be spent on:

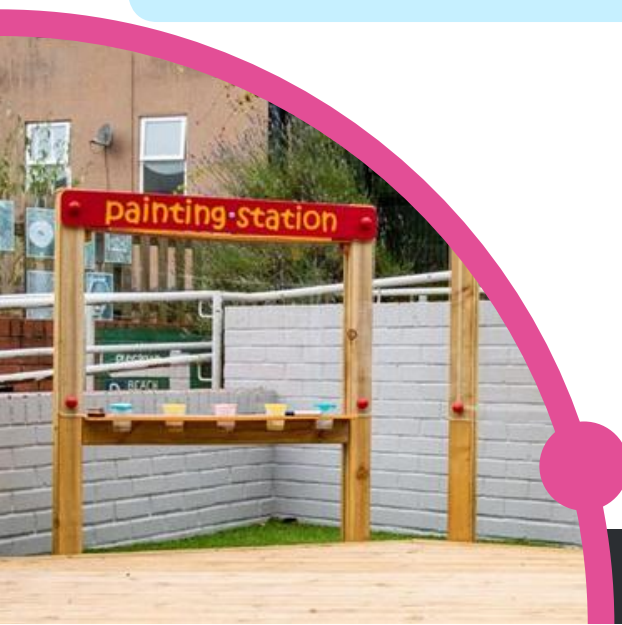
There are limitations to how these funds can be used, this includes:



- Employing coaches or specialist teacher to cover PPA time.
- To cover the national curriculum requirements.
- Capital expenditure



Schools should refer to their Capitalisation Policy to determine whether your proposed plans for the PE & Sports funding would be considered capital expenditure.







## Reporting

Schools must publish details of how the PE & Sports premium funding is being spent by the deadline of 31st July 2023. This online reporting would need to include:

- The amount of funding received
- A breakdown of how it has been/will be spent
- Ways in which pupils participation and success in PE, sport and physical activity
- The sustainability of the improvements in the long term

## Accountability

Schools are accountable for how their PE & Sports Premium funding is spent, for the purpose that it was intended; to make sustainable updates to the PE & Sports opportunities offered for pupils. You need to consider the following points and a members of the governing body, SLT, should review:

- How funding is spent
- How these plans fit within school improvement plans
- The effect on pupils

Schools need to follow the terms outlined in the conditions of grant -



<https://www.gov.uk/government/publications/pe-and-sport-premium-conditions-of-grant-2022-to-2023>



## Further Resources

You can read more about this funding and how it can be used here:



- [Association for PE](#) - advice on the PE premium
- [Youth Sport Trust](#) – primary PE and sport premium
- [DfE teacher blog](#) for best practice examples of how schools are using their premium effectively
- [National Governance Association \(NGA\)](#) guidance on use of the PE and sport premium and how governing boards can influence and support the planning and delivery of PE as well as physical activity and sport and monitor the impact
- [Active Partnerships](#) can provide further advice on how best to use your PE and sport premium





# FAQ'S

## Can funding be used to buy resources?

If an assessment of current PE and sport resources reveals a demand for more resources, then the available funding can help meet such needs. However, it should not be used to upgrade existing core equipment that is still functioning. The funds are aimed at expanding curriculum offerings or boosting teacher skills in order to promote increased participations levels - efforts beyond what would already be funded by standard school budgets.

## What is considered 'Capital' spending?

The DfE does not set the capitalisation policy for each school. School Business Managers, school accountants and their auditors are best placed to advise on school's agreed capitalisation policy. We encourage schools to consult with their school Business Manager, accountant or auditor to determine which items would be considered capital expenditure.

## Can I use my sports premium funding for fixed outdoor sports equipment e.g. gym equipment, goals, trim trails and climbing frames?

This is a question that often comes up, and the answer is yes you can! We work with lots of schools who use their PE & Sports funding for Outdoor Playground & Sports Equipment.

Outdoor equipment is sometimes classed as 'capital expenditure' within schools. However the DfE does not set the capitalisation policy within schools, therefore it is worth checking this policy and speaking with your school business manager about this.

## What does the criteria mean by sustainable?

The funding must be spent providing long-term solutions for PE, sport and physical activity for the benefit of existing and future pupils. Improvements must be embedded in the system which will remain intact for years to come.

## Can funding be carried over to the following year if not spent?

Schools must utilise the grant provided for the current academic year to enhance the students' education, as per the DfE regulations. The funding must be spend by 31st July 2023.

## Can PE premium funding be spent to improve pupils mental health?

Schools can allocate funding towards mental health initiatives that meet the criteria for using physical activity to achieve mental health-related outcomes.

## When will our school receive our funding?

The payment is spread over two payment dates across the academic year, this is dependent on the type of organisation.

## How is the funding calculated?

The amount granted is dependent on the amount of pupils in years 1-6 (or aged 5-10 in school's without year groups), which is taken from the previous year school census.

## Who is eligible for the funding?

The majority of schools in England with primary-aged pupils will receive the PE and Sports Premium in the 2022-2023 academy year - further details can be found here

Sources :

<https://www.gov.uk/guidance/pe-and-sport-premium-for-primary-schools#payment-dates-for-2022-to-2023>

<https://www.gov.uk/government/publications/pe-and-sport-premium-conditions-of-grant-2022-to-2023>







## PE & Sports Premium - Products

We work with hundreds of school every year and have put together some of our post popular products to help promote PE & Sport and Physical Activity in your school.

Over the past 10 years, schools throughout England have used their PE & Sports Premium funding to improve their physical activity offering with these being the most commonly purchased products.

- Adventure Trails
- Trim Trails
- Traverse Walls
- Goal Ends
- Gym Equipment
- Climbing and Activity





# Adventure Trails

creative play



## Featured Product!



14 Play Features!

**AT14** Adventure Trail 14

**£10,329** ex VAT



**AT16**

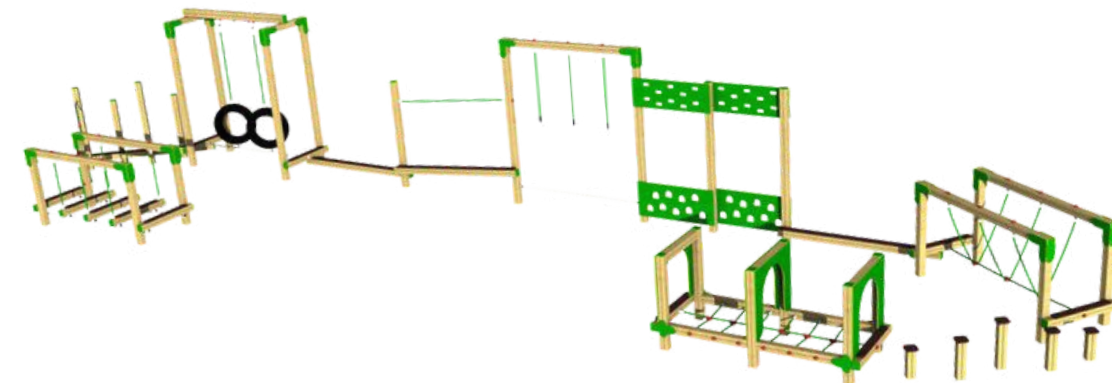
Adventure Trail 16

**£11,756** ex VAT

**AT12**

Adventure Trail 12

**£8,900** ex VAT



**AT10**

Adventure Trail 10

**£7,116** ex VAT

**AT6**

Adventure Trail 6

**£3,903** ex VAT



**AT8**

Adventure Trail 8

**£5,212** ex VAT





# Trim Trails



**CP105**

Mississippi Trail

**£11,828** ex VAT

**Featured Product!**



Cater for the whole class!

**CP106** Rio Grande Trail

**£11,696** ex VAT

**CP104**

Chattahoocee Trail

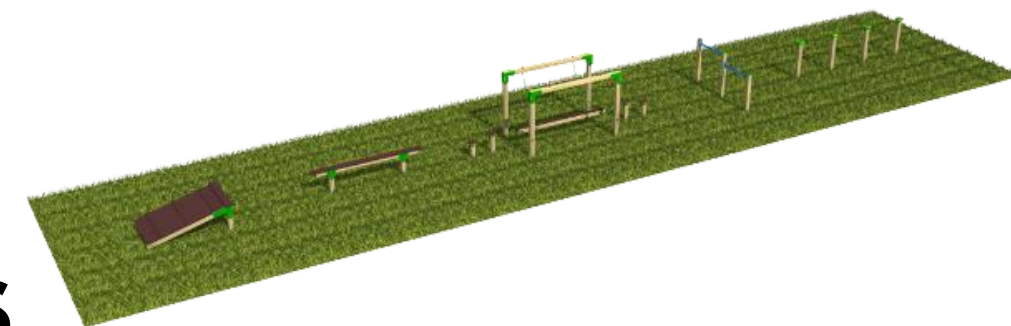
**£11,828** ex VAT



**CP101**

Hudson Trail

**£3,796** ex VAT



**CP103**

Potomac Trail

**£7,271** ex VAT



Prices include delivery and installation

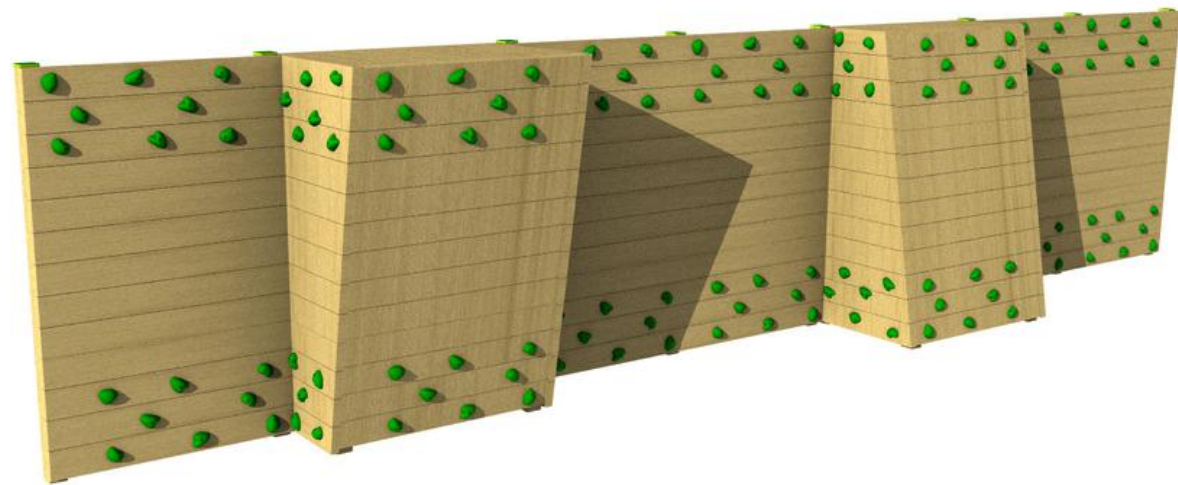




# Traverse Walls



## Featured Product!



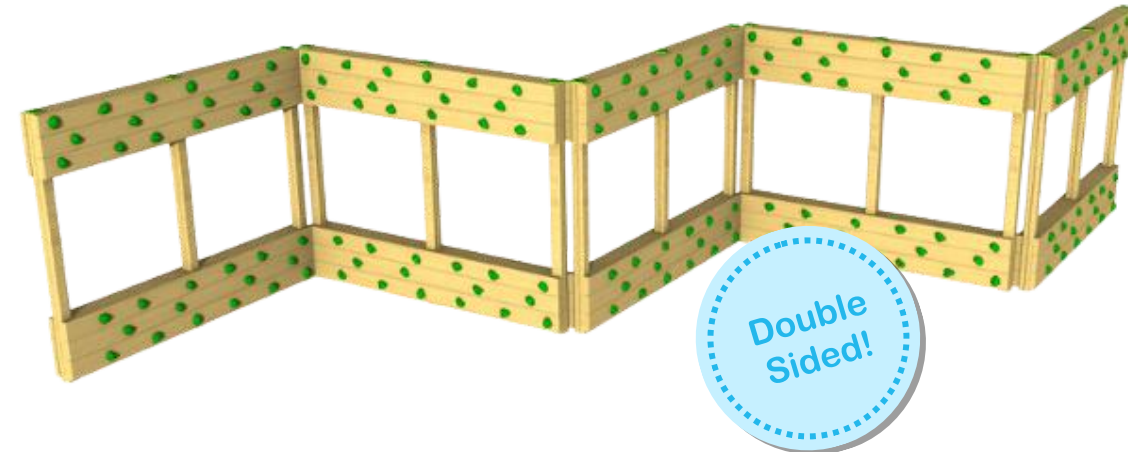
**TWX104** Rocky Traverse Wall

**£4,980** ex VAT

**TWX101**

Pennines Traverse Wall

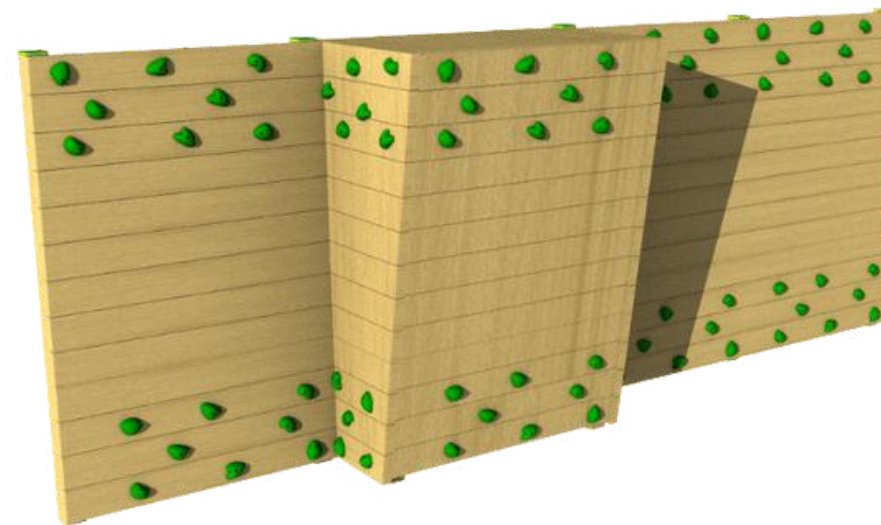
**£11,756** ex VAT



**TWX105**

Andes Traverse Wall

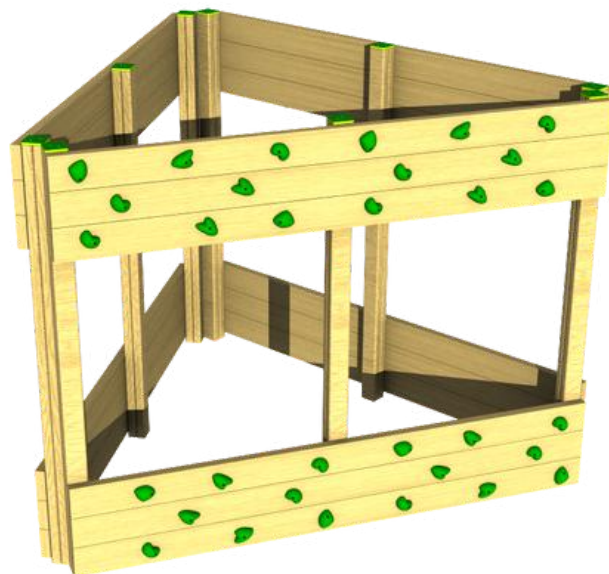
**£2,834** ex VAT



**TWX102**

Snowdonia Traverse Wall

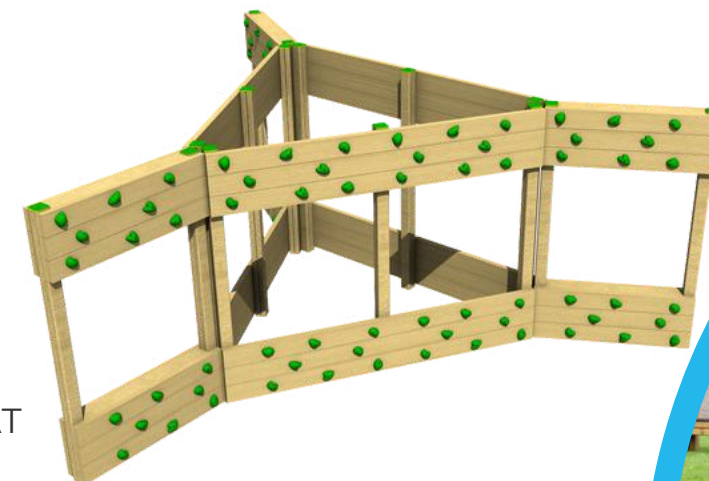
**£2,439** ex VAT



**TWX103**

Alps Traverse Wall

**£5,547** ex VAT





# Goal Ends & Sports Walls



**TGX1**

Target Example 1

**£4,570** ex VAT

**Featured Product!**



**TGX2** Target Example 2

**£4,570** ex VAT

**TGX3**

Target Example 3

**£6,532** ex VAT



**TGX8**

Target Example 8

**£9,151** ex VAT



**TG201-2**

Goal - 5 A Side

**£3,915** ex VAT



Prices include delivery and installation

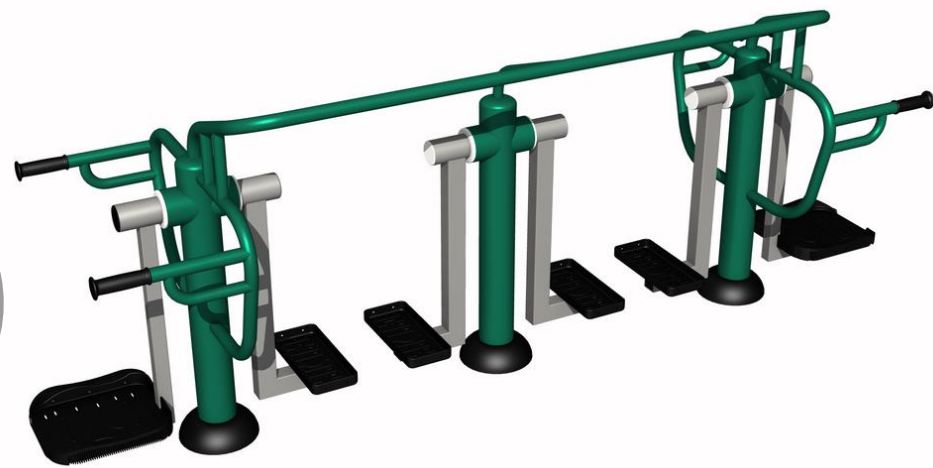


# Gym Equipment



## Featured Product!

4 Users!



**GYM318** Energise Multi-Gym  
**£2,736** ex VAT

## GYM306

Double Health Walker

**£1,724** ex VAT



## GYM312

Arm and Pedal Bike

**£1,324** ex VAT



## GYM310

Sky Stepper

**£1,468** ex VAT



## GYM304

Leg Stretch

**£890** ex VAT





# Gym Equipment



## GYM301

Double Sit  
Up Bench

**£1,268** ex VAT

## Featured Product!



**GYM322** Motiv8 Multi-Gym

**£7,794** ex VAT

8  
Users!

## GYM307

Double Slalom  
Skier

**£1,290** ex VAT



## GYM303

Waist Trainer

**£1,557** ex VAT



## GYM308

Horse  
Rider

**£1,024** ex VAT



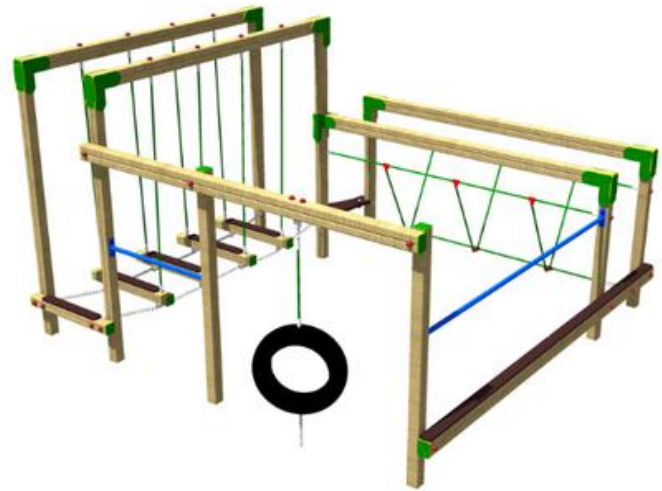
Prices include delivery and installation



# Climbing & Activity



## Featured Product!

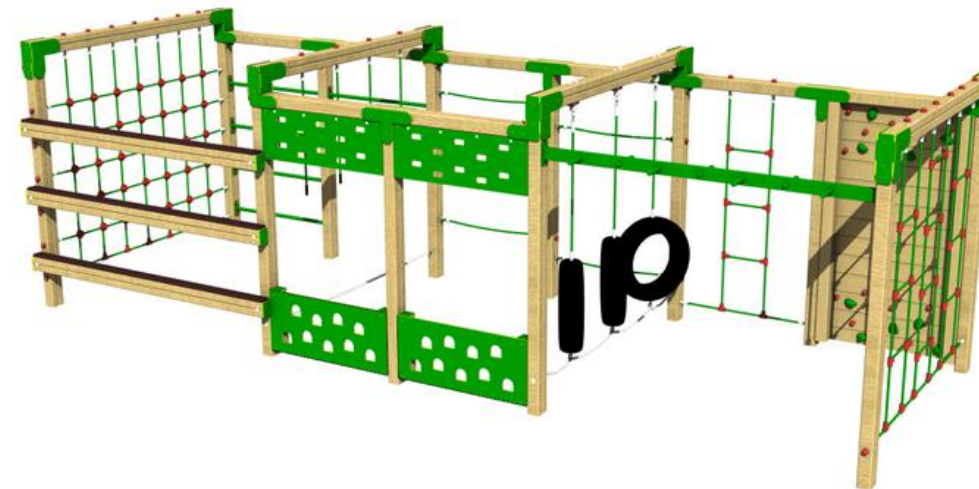


Open Ended Play!

**CF102** Derwent Climbing Frame  
**£4,284** ex VAT

**CF109** \*  
Arun Climbing Frame

**£7,710** ex VAT



**CF106** \*  
Mersey Climbing Frame

**£10,447** ex VAT

**CF105** \*  
Ribble Climbing Frame

**£7,710** ex VAT



**CF101**  
Dee Climbing Frame

**£3,927** ex VAT





# Climbing & Activity



**AC103**

Clyde Activity Centre

**£6,462** ex VAT

**Featured Product!**



30+ Pupils!

**AC101** Dart Activity Centre

**£8,305** ex VAT

**AC203**

Calder Activity Centre

**£5,890** ex VAT



**AC102\***

Trent Activity Centre

**£8,305** ex VAT



**AC205**

Windermere Activity Centre

**£5,890** ex VAT



Prices include delivery and installation

\*Safety surfacing required



# Climbing & Activity

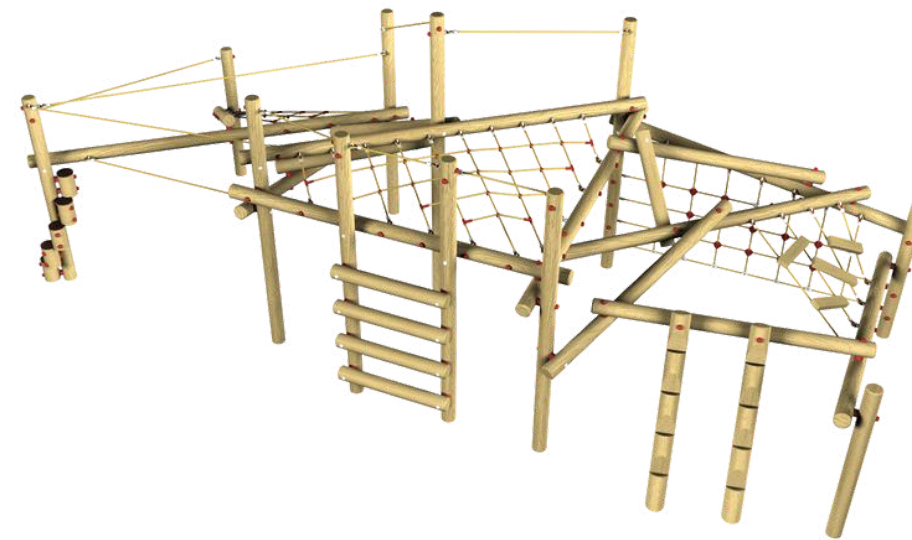
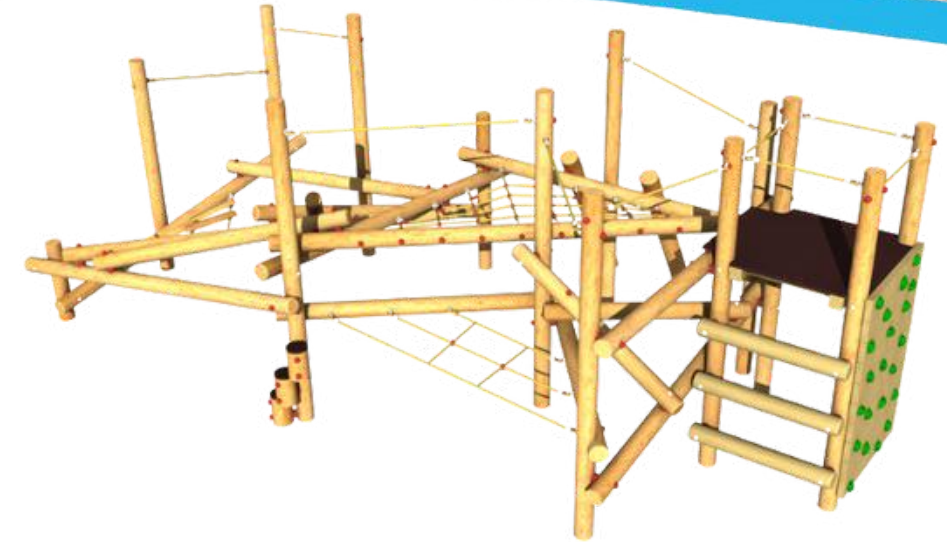


## Featured Product!



**JC108\*** Jungle Climber + Curved Slide  
**£9,256** ex VAT

**JC107\***  
Jungle Climber  
+ Climbing  
Panel  
**£8,303** ex VAT



**JC106\***  
Jungle Climber  
Combi  
**£12,922** ex VAT

**JC102**  
Jungle  
Climber  
Midi  
**£7,806** ex VAT



**JC101**  
Jungle Climber  
Mini  
**£5,652** ex VAT







## PE & Sports Premium - Packages

Take inspiration with our PE & Sport Premium packages! Designed to make the most of available space and budget, while encouraging physical activity!

- [Why chose a Creative Play Package?](#)
- [Race On Package](#)
- [Mountain Trail Package](#)
- [Multi Court Package](#)
- [Primary School Fitness Package](#)
- [Primary School 4 Station Package](#)







## Did you know?



Our playground equipment packages are a great way of helping you and your pupils achieve the key milestones set out in the national curriculum.



In particular, playground equipment helps develop fundamental movement skills and abilities including the 12 key skills highlighted within the curriculum.







# What are the 12 key KS1 & KS2 fundamental movement skills outlined in the national physical education curriculum?



THROWING



CATCHING



JUMPING



FLEXIBILITY



AGILITY



CONTROL



RUNNING



TEAMWORK



BALANCE



CO-ORDINATION



STRENGTH



RYTHM & MOVEMENT







# 'Race on' Package

2x



+



# £12,387

ex VAT

## What's Included?

- 2x Adventure Trail 8
- Stopwatch
- Delivery & Installation

**Surfacing required:** No, if installed onto well maintained grass



BALANCE



CO-ORDINATION



STRENGTH



AGILITY



FLEXIBILITY



CONTROL





# £8,776

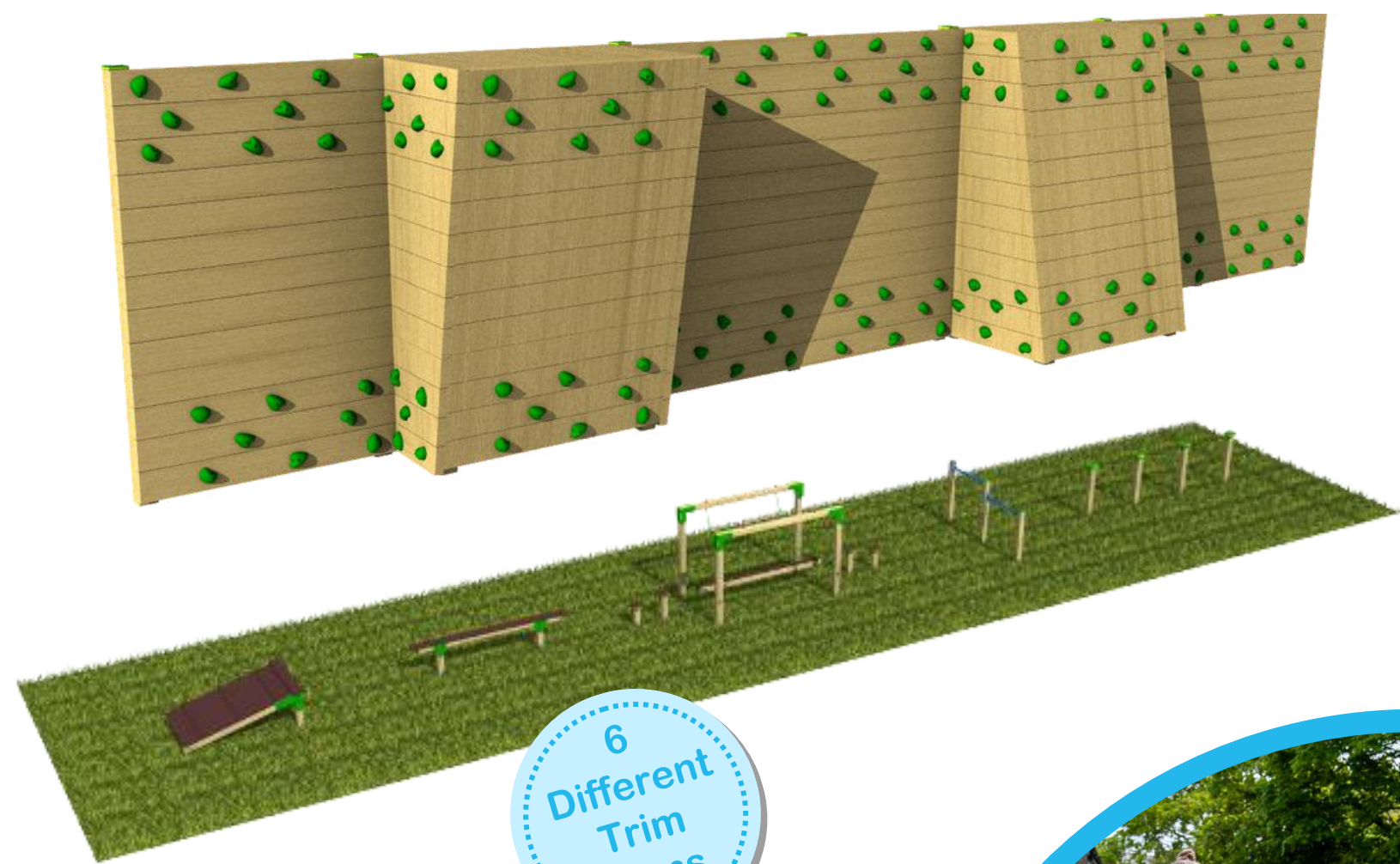
ex VAT

## What's Included?

- Rocky Traverse Wall
- Hudson Trail
- Delivery & Installation

**Surfacing required:** No, if installed onto well maintained grass

# Mountain Trail Package



6  
Different  
Trim  
Items



BALANCE



CO-ORDINATION



STRENGTH



AGILITY



FLEXIBILITY



CONTROL



RUNNING







# Multi Court Package

2x



# £9,140

ex VAT

## What's Included?

- 2x Target Example 2
- Delivery & Installation

Surfacing required: N/A



BALANCE



CO-ORDINATION



TEAMWORK



AGILITY



CATCHING



CONTROL



THROWING





# £8,243

ex VAT

## What's Included?

- Double Health Walker
- Double Slalom Skier
- Sky Stepper
- Horse Rider
- Rower
- Arm and Pedal Bike
- Delivery & Installation

Surfacing required: N/A

# Primary School Fitness Package



BALANCE



CO-ORDINATION



STRENGTH



AGILITY



FLEXIBILITY



CONTROL



RYTHM & MOVEMENT







# Primary School 4 Station Package

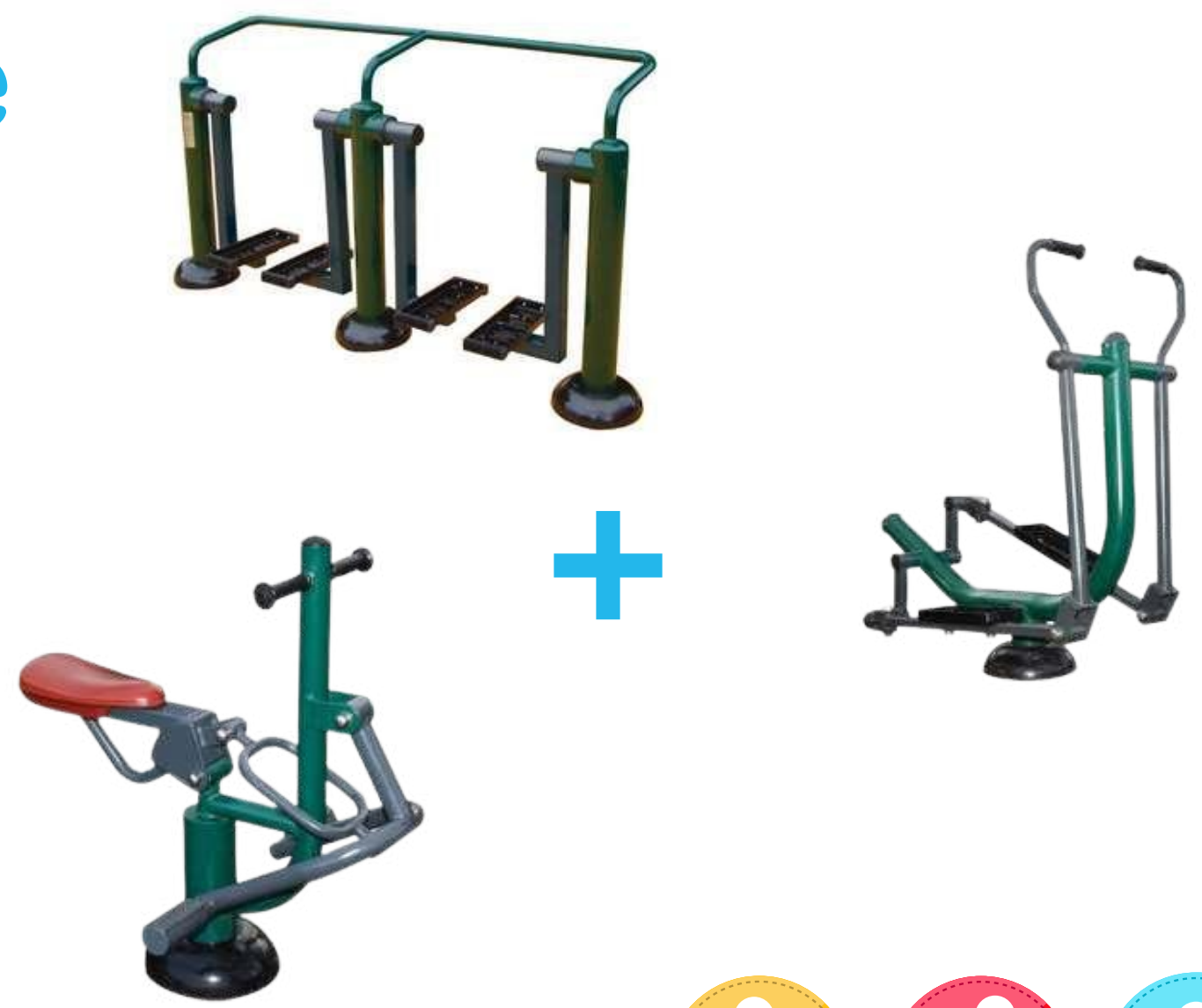
# £5,506

ex VAT

## What's Included?

- Double Health Walker
- Double Slalom Skier
- Sky Stepper
- Horse Rider
- Delivery & Installation

Surfacing required: N/A



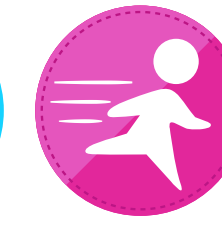
BALANCE



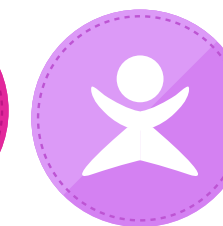
CO-ORDINATION



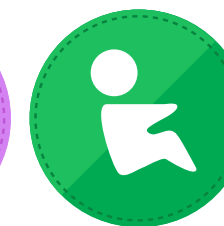
STRENGTH



AGILITY



FLEXIBILITY



CONTROL



RYTHM & MOVEMENT





## Evidencing the impact of the PE and Sport Premium

It is important that your grant is used effectively and based on school needs.

Under the Quality of Education, Ofsted inspectors consider:

**Intent** - Curriculum design, coverage and appropriateness

**Implementation** - Curriculum delivery, Teaching and Assessment

**Impact** - Attainment and progress

To assist schools with common transferable language this template has been developed by the Association for Physical Education, to utilise the same three headings which should make your plans easily transferable between working documents.



Click [here](#) to access the document, or scan the QR code





**creative**  
play

## GET IN TOUCH

[play@creativeplayuk.com](mailto:play@creativeplayuk.com)

01244 375627

[www.creativeplayuk.com](http://www.creativeplayuk.com)



ROSPA  
Member

