



creative
play

Funding Pack

When embarking on a playground development project the first obstacle encountered is often funding.

“How much will it cost?” & “Where can we source the funds?” are 2 of the most frequently asked questions.

Funding can be pretty overwhelming! Here are our top tips and things to consider to help you secure your playground funding;

Planning is KEY What are your aims? What are you looking to achieve? Plan ahead to allow plenty of time, applications aren't granted over night

Get everyone involved! Build a fundraising team! Get the children involved too and get everyone excited and engaged.

List what needs to be done and allocate each responsibility to an individual

That way it is easy to keep on track and on top of the project. The children will benefit from the new playground so why not get them involved in the fundraising process. School and community events are fun and a fantastic way to fundraise & every little helps!

Stand out!!! Point out what makes your project different to others in the grant process.

Demonstrate a need Describe the existing problem and list the benefits of your proposal. Will it make a difference to the local community? Then back this statement up with evidence you have gathered. Sound enthusiastic about the project at hand.

Project time scale Outline a date of when you would like to see the project completed to indicate when you need the funds by.

Budget What is the total cost? How much have you fund-raised so far? How much do you require from funders? Do your homework and make a list of the items required and the cost. Alternatively contact your selected play equipment provider for a free no obligation quote.

Select the appropriate funders Check that you are eligible and meet the criteria to be awarded funding before going ahead with an application

Do your research Look at current trends of recent funding. Are there any current funding projects or opportunities in your local area? Find out what each funder expects you to provide with your application.

Maintaining your project Outline how you will continue to maintain your project once the funding stops

Last but not least, be POSITIVE! An application that sounds successful is more likely to be successful.

To get you off to a flying start with your application we have put together a list of some of the main sources of funding available;



The National Lottery Community Fund

National Lottery Funding can help you to make a difference in your community. National Lottery Awards for All offers funding to support what matters to people and communities.



How much?

£300 - £10,000



Who can apply?

Local authorities, registered charities, schools and community organisations.



www.tnlcommunityfund.org.uk/funding/under10k



Sport England

Sport England invest in sport and physical activity to make it a normal part of life with a vision to help get more people physically active.



How much?

£20,000 - £150,000



Who can apply?

Sports clubs, charities, community organisations, local authorities and schools.



www.sportengland.org/funds-and-campaigns



Sport Scotland

Sport Facilities Fund (SFF) supports capital projects that create or improve places where people take part in sport and physical activity.



How much?

Up to £100,000



Who can apply?

Community organisations and schools.



www.sportscotland.org.uk/funding/sport-facilities-fund



Sport Wales

Sport Wales aim for Wales to be a more active, healthier nation. A national organisation responsible for developing and promoting sport and physical activity in Wales.



How much?

£300 - £50,000



Who can apply?

Community groups and non-profit organisations.



www.sport.wales/grants-and-funding/beactivewalesfund



FCC Community Fund

FCC Communities Foundation awards grants to community projects from funds donated by FCC Environment through the Landfill Communities Fund and Scottish Landfill Communities Fund.



How much?

£2,000 - £100,000



Who can apply?

Local authorities, registered charities and church council.



www.fcccommunitiesfoundation.org.uk



ASDA Foundation

The Asda Foundation supports small, grass root organisations. Working with their Community Champions, they're able to work with many organisations/groups on a variety of projects.



How much?

£5,000 - £25,000



Who can apply?

Local authorities, registered charities, schools and community organisations.



www.asdafoundation.org



Veolia Community Grant

Community Grant Scheme is available to constituted not-for-profit organisations and local authorities to create or improve buildings, or outside spaces for the benefit of the community.



How much?

£10,000 - £75,000



Who can apply?

Local authorities, registered charities & non-profit organisations.



www.veoliatrust.org/funding



Enovert Community Trust

The Trust supports community & environmental projects, such as improving/creating new children's play areas, restoring green spaces, & enhancing sports/recreation facilities.



How much?

circa £50,000



Who can apply?

Local authorities, registered charities & non-profit organisations.



www.enovert.co.uk/enovert-community-trust/funding





Viridor Credits

Viridor Credits Environmental Company provides funding for community, heritage & biodiversity projects around the UK through the Landfill Communities Fund and Scottish LCF.



How much?

Up to £25,000



Who can apply?

Non-profit organisations.



[www.viridor-credits.co.uk/
apply-funding](http://www.viridor-credits.co.uk/apply-funding)



HS2 The Community and Environment Fund

The CEF adds benefits to communities that are demonstrably disrupted by the construction of Phase One of HS2 from London to West Midlands and Phase 2a from the West Midlands to Crewe.



How much?

£10,000 - £250,000



Who can apply?

Schools, local authorities, community groups, registered charities and non-profit organisations.



[www.hs2funds.org.uk/home/
community-environment-fund](http://www.hs2funds.org.uk/home/community-environment-fund)



BIFFA Award

Biffaward is one of the most respected Landfill Communities Fund schemes, and has awarded more than £100 million to worthwhile projects since 1997.



How much?

£5,000 - £50,000



Who can apply?

Local Authorities and non-profit organisations.



[www.biffa-award.org/
recreation](http://www.biffa-award.org/recreation)



Creative Play is proud to be an active member of the The Association of Play Industries (API) who are the leading trade organisation within the Play Industry, actively promoting all matters relating to play. Founded in 1984 they have been 'the voice of the play industry' for over 30 years.

These experts have compiled an up-to-date list of funding sources specifically for the purpose of developing school and community play areas:

www.api-play.org/resources/funding

The first things to consider when completing a funding application:

1

Make sure you meet the criteria detailed from the funding provider to ensure you meet all the specified requirements. See our [Funding Application Library](#) provided to review and research some of the main sources of funding.

2

Once selected, you will need to **read all of the guidelines before starting your chosen funding application** so you are confident on what's to be done.

3

Remember the Three P's [Project](#) , [Plan](#) and [Permission](#)

See below for more information

PROJECT

Be clear of the project you are wanting to fund. It is essential that you provide as much detail as possible as this will only help support your application.

You may also want to consider:

1. What funds do you already have in place?
2. How much are you wanting to raise?
3. Why do you want to undergo this project in the first place?

PLAN

You will then need to start gathering information for the application. See our included [Starting your Application](#) guide to help support you when you come to completing the actual funding application form.

PERMISSION

Make sure you do not need to apply for any planning permissions before acquiring the funds for your project. You can ask your Council if planning is required and they will be able to assist you with this.

Firstly you will need to provide details of your organisation; this might be quite in-depth depending on the application you are completing.

Try and gather as much of the information listed below as this will help you greatly:

- Name and Address of your Organisation
- Type of Organisation
- Website
- Banking Details
- Insurances
- Recent Accounts

1. Name the project

2. It is ideal to assign a main contact for the application

Who will take lead responsibility - ie. a headteacher, teacher, school business manager

--

3. You may also need to assign a senior contact

Someone to be 'second in command' in case the main contact is unavailable

--



4. Provide information on the project you are wanting to fund, what it entails and the time scales you are hoping to work towards

ie. sensory garden, including play equipment & safety surfacing. To be completed for next term (3 months)



5. Detail why your project is needed and provide evidence for this

ie. outdoor classroom/ learning facilities, more sports facilities to combat child obesity

6. Provide a list of who will benefit from the project and how it will impact the children

ie. provide safe open outdoor play facilities for more built-up urban environments, inclusive play equipment that can be utilised for all pupils, including those with Special Education Needs

7. Provide a cost breakdown - including products/ activity details

PRODUCT	PRICE	AMOUNT REQUESTED
EXAMPLE JC102 Jungle Climber Midi	£5,450 exc VAT	£5,000

8. Detail where you are acquiring the above costs from

Creative Play, name of suppliers, etc.

Finally when finishing the application, please make sure you have all the accompanying documentation required and all of the form has been filled in.





Cake Sales – These always go down a treat, who doesn't love a treat every so often and the children will love getting involved!

Coffee Morning – Why not host a Coffee & Tea morning for parents? Maybe sell some left over cakes from the Cake Sale (that's if there are any left!)

Car Wash – Kids will love washing cars, it's a fun activity for them and people love clean cars!



Raffle – Ask around for prizes to donate and you will soon have a raffle everyone will want to get involved in!

Running – Sponsor the kids or staff (or even parents) to run a certain distance, maybe they have to do it in fancy dress? Use your imagination and make it fun! Best of all its a great way to stay active!



Egg and Spoon Race - How about £1 to take part in the race with the chance to win a prize kindly donated?



After School Film Night – Get the projector out and let the kids enjoy a film after school, £1 to watch the movie and £0.50 for some popcorn and a drink?

Art Day – Kids always enjoy art lessons so why not make a day of producing pieces of art for parents to purchase etc.?



Toy Sale – Children always grow out of their toys so why not have a toy sale?

Talent Show – Kids are full of talent and always want to show off so this is the perfect opportunity for them to do just that.



Indoor Games – Why not have an indoor games session with the children? Small fee to play games for an hour, who wouldn't?

Ice Cream & Smoothie Making – What a fun activity to take part in especially over the summer then all you have to do is sell them (make sure you do it before they melt!)

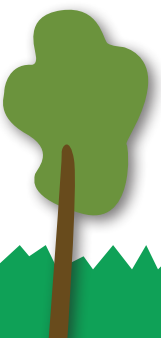


Volunteering – This is probably one of the most successful ways of funding, volunteer to do something within the local community and just ask for donations with the information for what it is for, the results will be surprising!

Valentines Dinner & Dance – Great chance for the little ones to team up with a partner for a lovely Dinner and Dance, they will love the chance to have a boogie too....



Eco Day – Children will love getting involved in this, how about building a tent or a den? This is also a great team building exercise...



P

Packing Bags – Again this is always a great way of raising money, ask your local supermarket if you can spend the day packing their customer bags with a box for donations if they wish.

Pyjama Day – Pyjamas are the most comfortable clothing right? Why not let children spend the day wearing their PJ's? £1 per a child is all it needs...

L

Lunch – But not just any lunch.... Ask a local chef to provide the children with a special meal for their lunch, let them chose from a special menu, just at a tiny fee.

Limbo Competition – Have the children pay for entry in the competition with the chance win a great donated prize. You could even do this with the parents!!!

A

Assault Course – Create the perfect assault course for the children and even adults to overcome - £1 entry.

Y

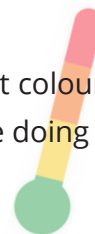
Your Own Clothes Day – Wasn't this one of the best days when you were at school? The chance to ditch the uniform and pop an outfit of your choice on? Well worth the £2 I'd say....

Yoga - Maybe you know a Yoga Instructor who can pop in for an hour to do a session with the children?

.....

As you can see there are so many things you can do, this is just a small snapshot of the possibilities.

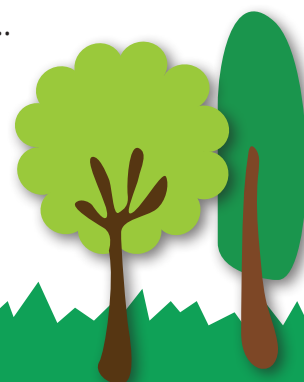
You could even create a fundraising thermometer, every time you hit a particular target just colour up to that mark. Why not display this at the front of the school so everyone can see what you're doing and they may even contribute, remember every penny counts!



So start your funding process today, whether you are applying for a funding grant or looking to do some fund raising of your own follow some of the steps within this pack and you will soon be on your way!

Creative Play are always on hand to help you through the process when you need it....

**Please feel free to get in touch by calling 01244 375 627
or by emailing us at sales@creativeplayuk.com**



Why not go that extra mile and build a specialist fundraising team? Assigning different job roles and distributing tasks to suit each individual's skill sets will allow you to work effectively together on a great project for a great cause. This doesn't have to be just staff members, why not get the children, parents, PTA or even the local community involved? The additional help is ideal for getting that extra push!

NAME	ROLE ASSIGNED

