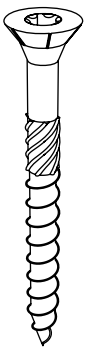


WSP209 - ROTATING PULLEY & BUCKET Installation Instructions

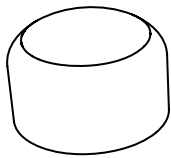


WSP209 - ROTATING PULLEY W BUCKET



x4

97.M8X80CSK



x4

102001-0 - M8



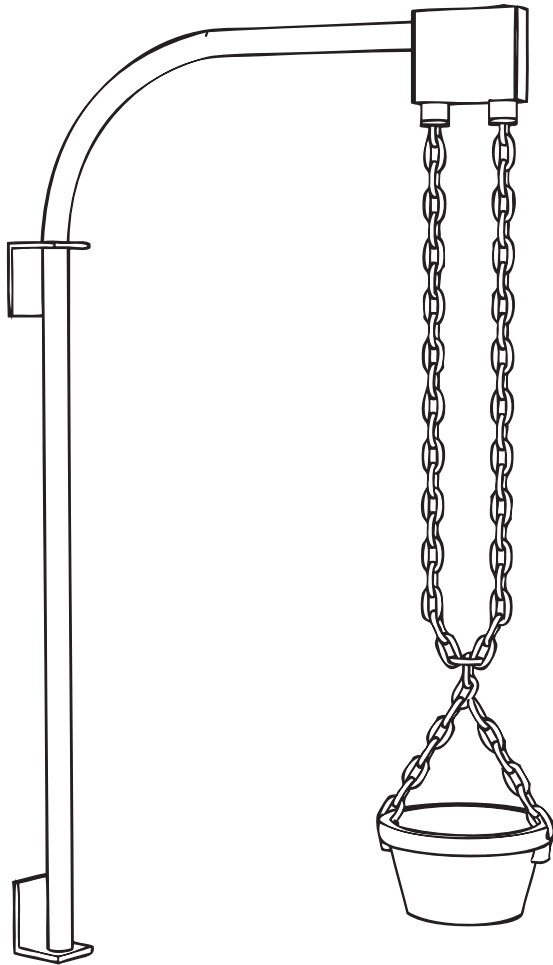
x1

WSP209a TIMBER

WSP209 - ROTATING PULLEY & BUCKET

Installation Instructions

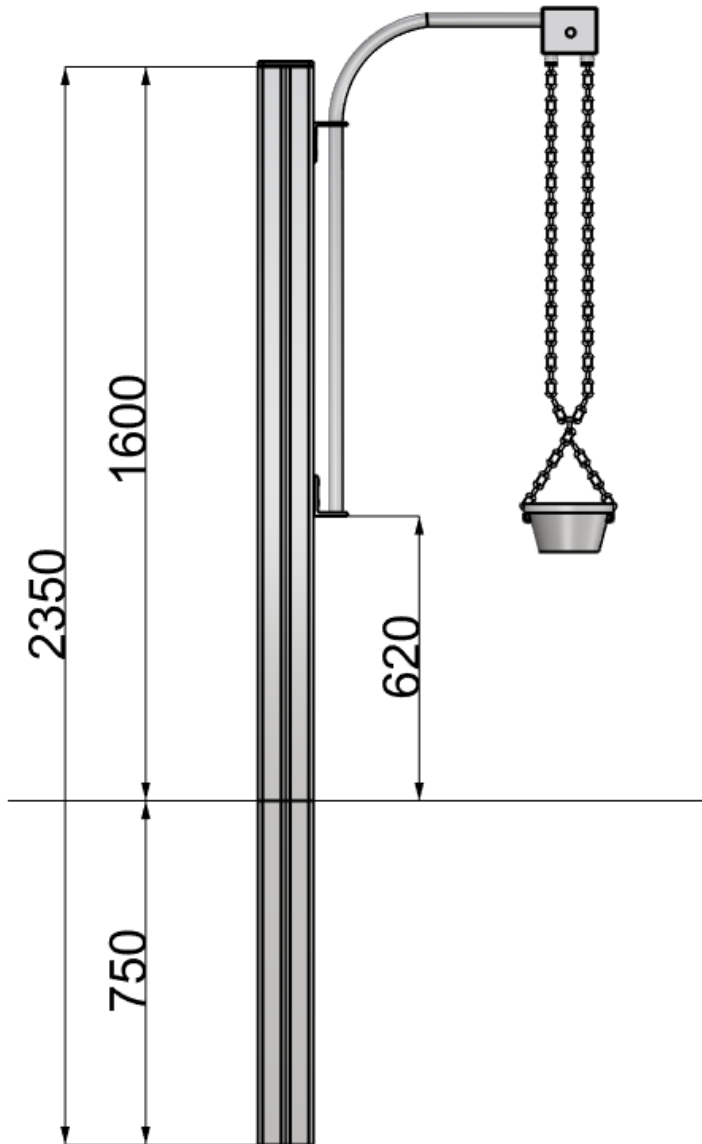
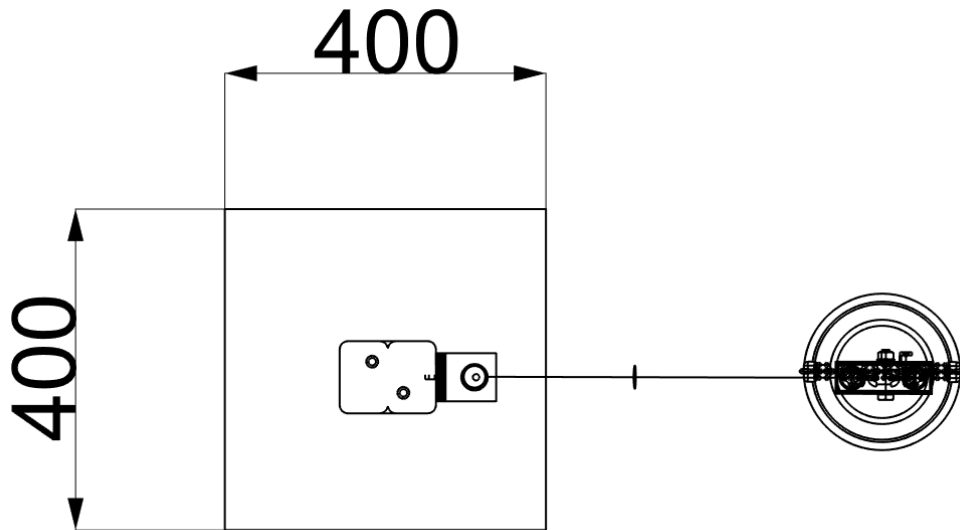
**creative
play**



x1

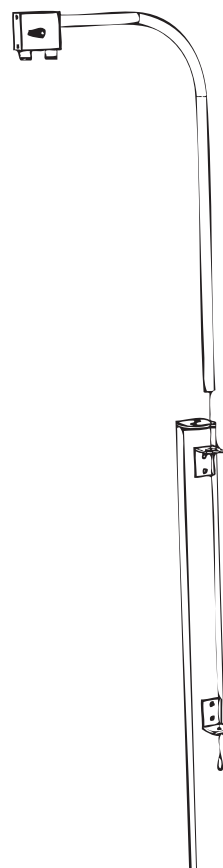
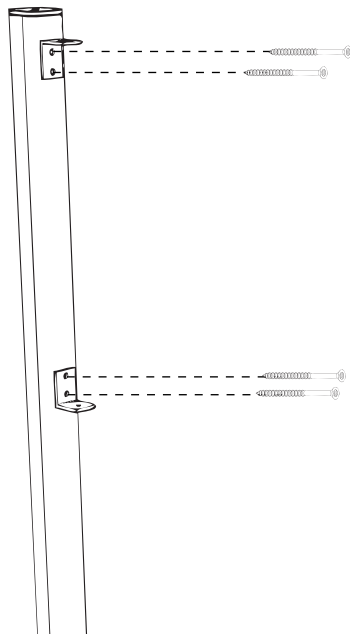
ROTATABLE SAND LIFT INC BUCKET (2M OF S/S CHAIN AND NUT CAPS ON PULLEY CASING / QUICKLINK)

FOUNDATION DETAILS

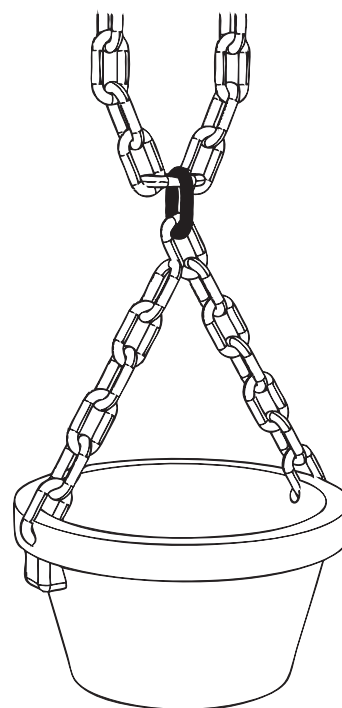
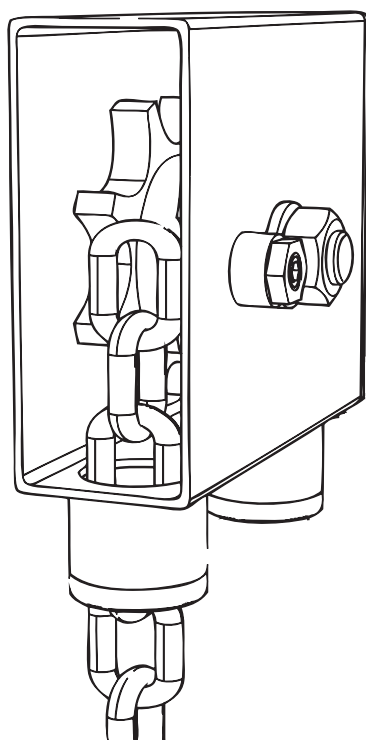


INSTALLATION INSTRUCTIONS

- 1** **ATTACH SAND LIFT RAIL TO THE UPRIGHT TIMBERS**
USING - 97.M8X80CSK - QUANTITY X 4 / 102001-0-M8 CAPS



- 2** **UNDO THE CASING PLATE TO INSERT CHAIN & ATTACH BUCKET**
ATTACH USING THE QUICKLINK - THIS MAY HAVE ALREADY BEEN PRE-ASSEMBLED



ADDITIONAL DIMENSIONS
